

Crab Cay Development, Bahamas

marine environmental



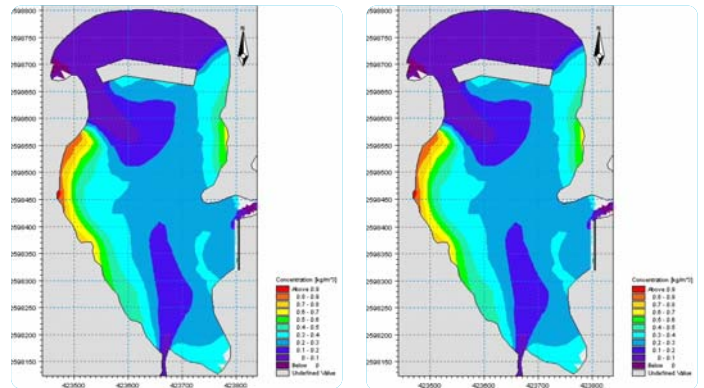
Coastal Systems International, Inc. prepared the Environmental Impact Assessment (EIA) for the Crab Cay Development in Great Exuma, The Bahamas. Crab Cay is a privately owned 180-acre cay (small island) located immediately offshore of mainland Exuma. The developer for Crab Cay proposed a comprehensive multi-use development for the island including resort and residential components and a mega-yacht marina.

Coastal Systems prepared a detailed EIA for the Phase 1 development project. The EIA included advanced coastal engineering modeling (storm surge elevations, dispersion flushing analysis for the marina basin), geotechnical analysis (supporting creation of low-rise structures on reclaimed lands), environmental analysis (justifying dredging and beach fill projects), and a comprehensive archaeological restoration plan for an 18th century ruin located on the island.

We helped our client present the project to the BEST Commission (the environmental regulatory authority of the Bahamas) and modified certain project components based upon governmental feedback. The project received full environmental approval in 2007.



The Crab Cay master plan included a megayacht marina and marina village, hotel, spa, and residential offerings.



As a component of the EIA approval process, CSI completed comprehensive flushing analysis for the marina facility. A flushing channel was incorporated into the design.

Client:	Murphy International Developments Ltd.
Location:	Exuma, Bahamas
Date of Completion:	N/A
Construction Cost:	N/A



CSI designed the marina facility to accommodate 118 slips with over 11,000 linear feet of mooring space.

